



WELLNESS • RECOVERY • RESILIENCE

**MENTAL HEALTH SERVICES ACT (MHSA)
FY 2022 ANNUAL UPDATE COMMUNITY PROGRAM PLANNING PROCESS
MONDAY, JANUARY 25, 2021 - 8:00AM
VIRTUAL MEETING**



COUNTY OF SANTA CLARA
Behavioral Health Services

Supporting Wellness and Recovery



COUNTY OF SANTA CLARA
Behavioral Health Services

**MENTAL HEALTH SERVICES ACT (MHSA)
FY2022 ANNUAL UPDATE COMMUNITY PROGRAM PLANNING PROCESS
JANUARY 25, 2021**

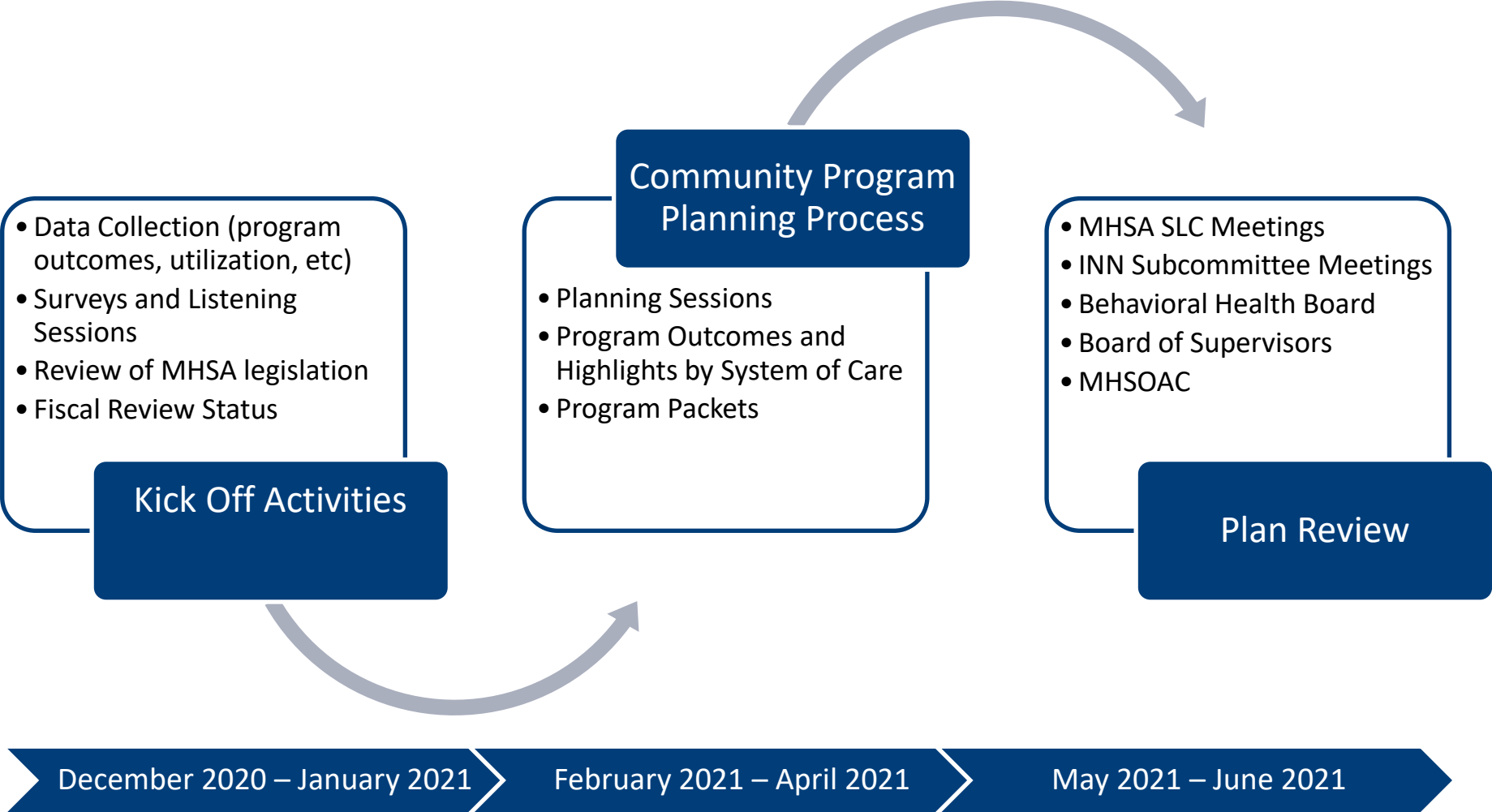
TOPIC	TIME
1. Introductions (Sherri Terao)	8:00 – 8:15 AM
2. Welcome by Director/Executive Team	8:15 - 8:25
3. Innovation Projects Updates (Jeanne Moral/Evelyn Tirumalai)	8:25 – 8:30
4. Overview of CPPP and Timeline (Roshni Shah/Evelyn T)	8:30 – 8:50
5. FY 2022 MHSA Revenue Projections & Estimated Expenditures a) Revenue (Tina Cordero) b) Budgets & Program Overview (Vince Robben) c) Q&A (Evelyn T)	8:50 – 9:35
6. Next Steps (Evelyn T)	9:35 - 9:50
7. Survey, Closing & Q&A	9:50 – 10

INNOVATION PROJECTS UPDATES*

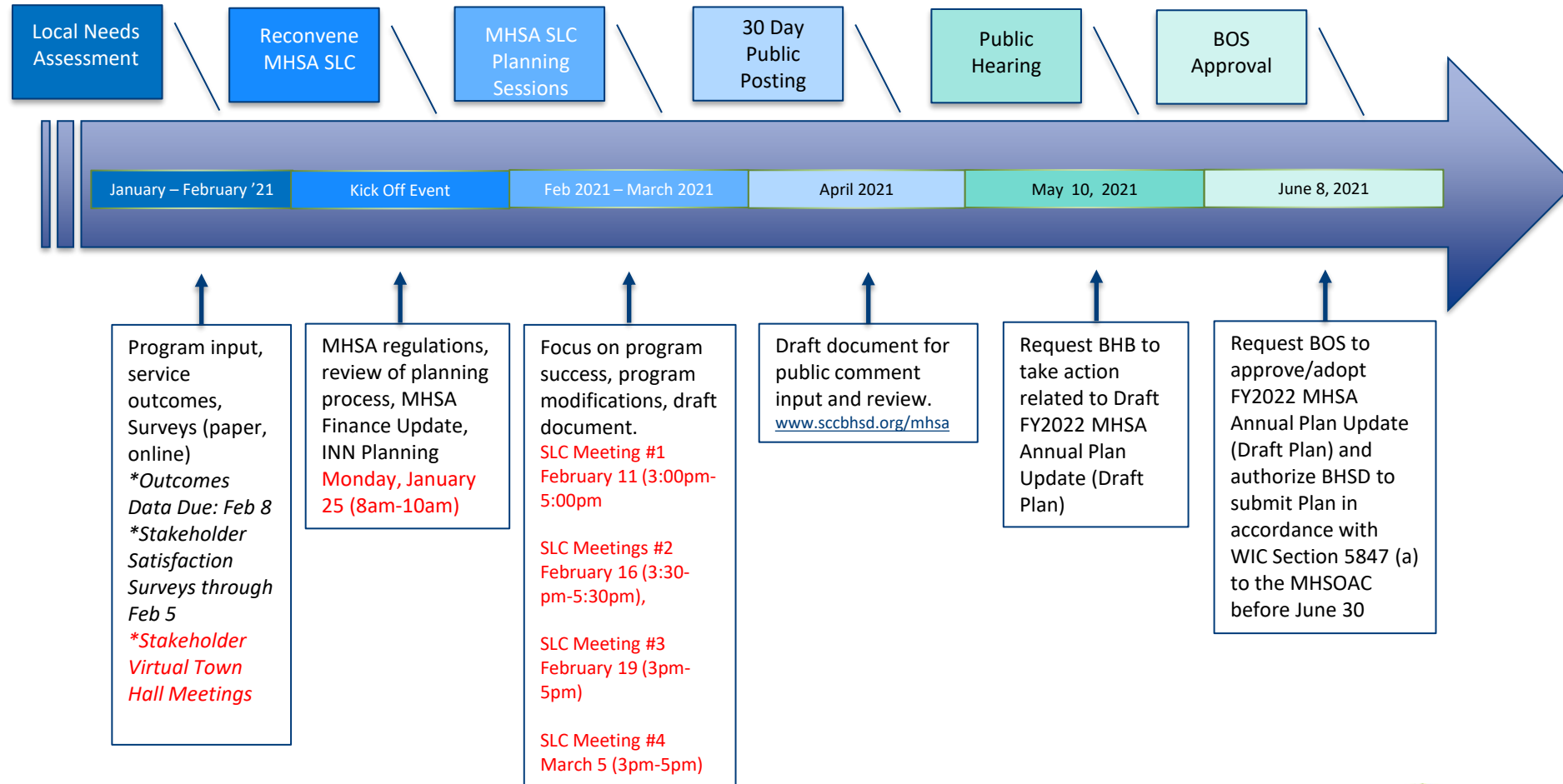
Project Name	Update	Next Steps
INN #14: Independent Living Facilities	<ul style="list-style-type: none"> • Reviewed by County Counsel (1/14/2021) • Echo back/revised project details sent to Mental Health Services Oversight and Accountability Commission (MHSOAC) on 1/15/2021 	<ul style="list-style-type: none"> • Pending a consultation meeting
INN #15: Community Mobile Response Program	<ul style="list-style-type: none"> • Provided an update to the BHB on 12/8/2021 • Conducting planning input sessions 12/12/2020 – 1/15/2021 	<ul style="list-style-type: none"> • Analyze gathered input/feedback from the planning input session with the MHSA SLC/BHCA via a workgroup committee 1st week Feb 2021 • Hold an MHSA SLC meeting February 2021 to share updated plan / Post Plan for 30-days
INN #16: Mental Health and Stigma in Diverse Communities	<ul style="list-style-type: none"> • BHB Public Hearing – 12/8/2021 • Board of Supervisors Approval – 12/15/2021 • Submitted INN 16 Plan to the MHSOAC 	<ul style="list-style-type: none"> • Upcoming presentation to request MHSOAC’s approval of the project <i>tentatively scheduled</i> – MHSOAC Commission Presentation of INN 16 tentatively scheduled for 2/25/2021

***January 29, 2021 – MHSA SLC INN Subcommittee at 2-3 PM Learn more details about the three projects and discuss possible options on the next round of INN planning/process.**

FY2022 MHSA ANNUAL PLAN UPDATE COMMUNITY PROGRAM PLANNING PROCESS



FY2022 ANNUAL UPDATE COMMUNITY PROGRAM PLANNING PROCESS OVERVIEW OF CPPP AND TIMELINE



FY2022 MHSA COMMUNITY PROGRAM PLANNING PROCESS SURVEY

- ✓ Purpose: to gather feedback from our clients/consumers on MHSA-funded programs and services
- ✓ Survey Languages: English, Spanish, Vietnamese, Chinese, Tagalog, Farsi
- ✓ Survey Administration:
 - ✓ Online using SurveyMonkey
 - ✓ English: January 20 – February 26, 2021
 - ✓ Other Languages: February 2021
- ✓ Survey Time: ~ 6-8 minutes



FY2022 MHSA COMMUNITY PROGRAM PLANNING PROCESS SURVEY

- ✓ Please help us spread the word!
 - ✓ English Survey Link:
https://www.surveymonkey.com/r/21MHSASurvey_Eng

- ✓ Seeing clients in person?
 - ✓ Contact the MHSA team for simple links to collect the data in person

- ✓ Questions?
 - ✓ Contact Evelyn Tirumalai at
Evelyn.Tirumalai@hhs.sccgov.org
 - ✓ Contact Roshni Shah at Roshni.shah@hhs.sccgov.org



FY2022 MHSA REVENUE PROJECTIONS & ESTIMATED EXPENDITURES

MHSA FINANCIAL PROJECTIONS
Community Services and Supports

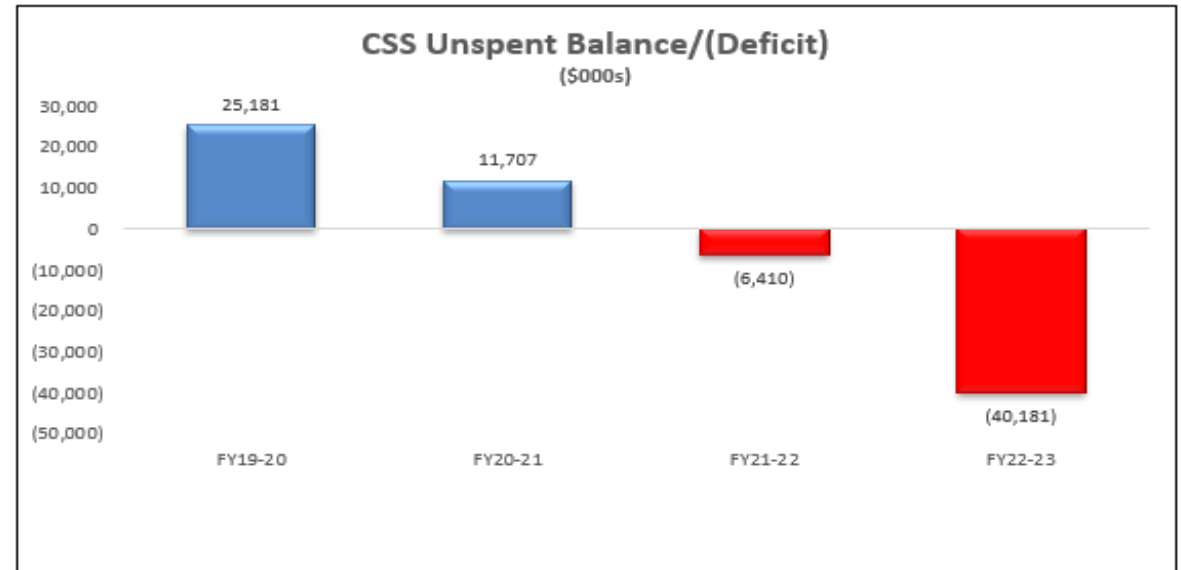
FY19-20		CSS
Unspent from FY19		43,590,751
Revenue including Interest		65,542,745
*Expenditure		(83,814,232)
Transfer from CSS		(1,685,826)
Prudent Reserve Transfer (req)		1,547,519
Unspent Balance at FY20		25,180,957

FY20-21		
Unspent Balance from FY20		25,180,957
Revenue Distribution from State		73,224,634
Projected Expenditure		(85,013,081)
Transfer from CSS		(1,685,826)
Unspent Balance at FY21		11,706,685

FY21-22		
Unspent Balance from FY21		11,706,685
Revenue Distribution from State		71,027,481
Projected Expenditure		(85,013,081)
Transfer from CSS		(4,130,890)
Unspent Balance/(Deficit) at FY22		(6,409,806)

FY22-23		
Unspent from FY22		(6,409,806)
Revenue Distribution from State		54,168,818
Projected Expenditure		(85,013,081)
Transfer from CSS		(2,927,392)
Unspent Balance/(Deficit) at FY23		(40,181,461)

The revenue decline along with projected expenditures will result in a deficit beginning in FY22.



Community Services and Supports (CSS)—provides funds for direct services to individuals with severe mental illness. Full Service Partnerships (FSP) are in this category; FSPs provide wrap-around services or “whatever it takes” services to consumers.

- 76% distribution from the State
- 3-year reversion window
- >50% spent on FSP programs

MHSA FINANCIAL PROJECTIONS
Prevention and Early Intervention

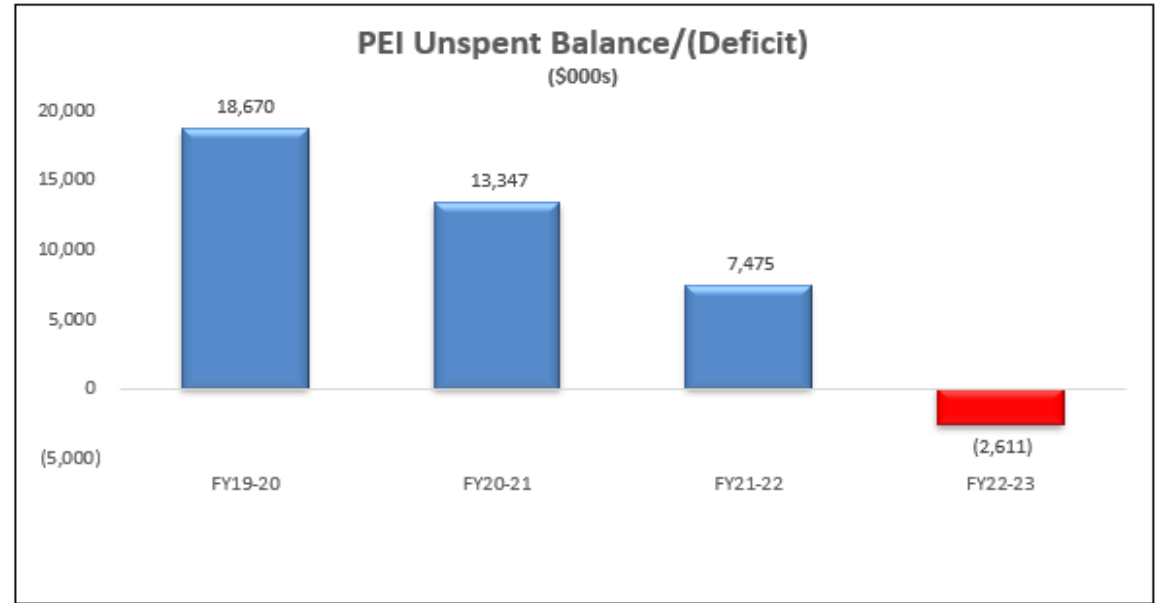
FY19-20		PEI
Unspent from FY19		21,265,183
Revenue including Interest		16,473,632
*Expenditure		(19,566,660)
Transfer from CSS		0
Prudent Reserve Transfer (req)		498,320
Unspent Balance at FY20		18,670,475

FY20-21		
Unspent Balance from FY20		18,670,475
Revenue Distribution from State		18,305,007
Projected Expenditure		(23,628,545)
Transfer from CSS		0
Unspent Balance at FY21		13,346,937

FY21-22		
Unspent Balance from FY21		13,346,937
Revenue Distribution from State		17,756,870
Projected Expenditure		(23,628,545)
Transfer from CSS		0
Unspent Balance/(Deficit) at FY22		7,475,262

FY22-23		
Unspent from FY22		7,475,263
Revenue Distribution from State		13,542,204
Projected Expenditure		(23,628,545)
Transfer from CSS		0
Unspent Balance/(Deficit) at FY23		(2,611,078)

The revenue decline along with projected expenditures will result in a deficit beginning in FY23.

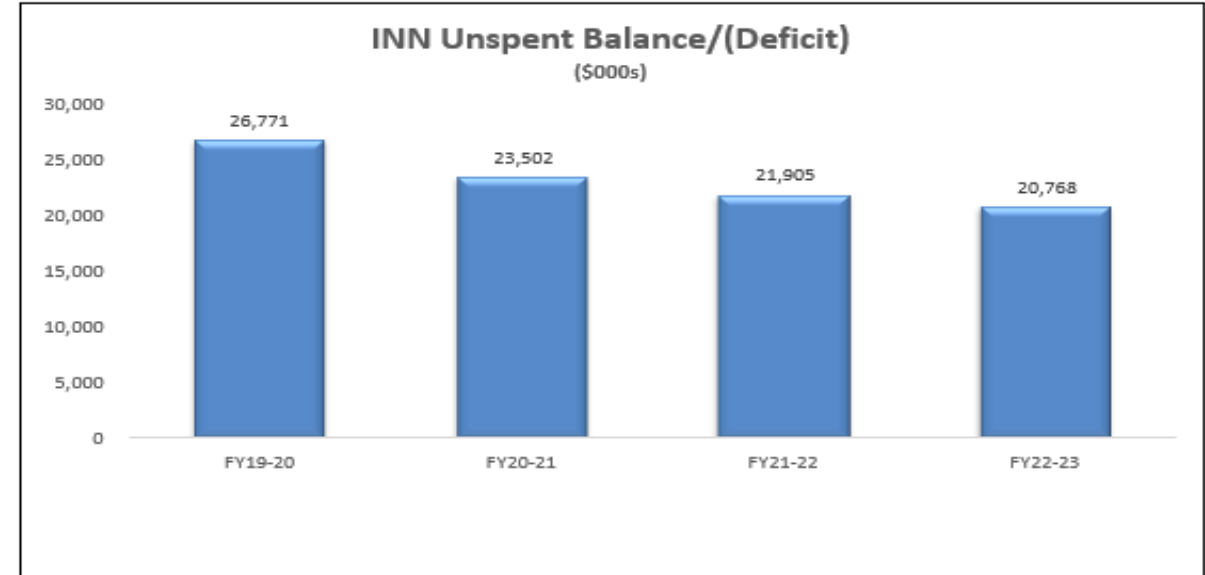


Prevention and Early Intervention (PEI)—provides funds to recognize early signs of mental illness and to improve early access to services and programs, including the reduction of stigma and discrimination.

- 19% distribution from State
- 3-year reversion window
- >50% spent on ages 0-25

MHSA FINANCIAL PROJECTIONS
Innovation

FY19-20		INN
Unspent from FY19		24,061,453
Revenue including Interest		4,711,781
*Expenditure		(2,001,758)
Transfer from CSS		0
Prudent Reserve Transfer (req)		0
Unspent Balance at FY20		26,771,476
FY20-21		
Unspent Balance from FY20		26,771,476
Revenue Distribution from State		4,818,077
Projected Expenditure		(8,087,736)
Transfer from CSS		0
Unspent Balance at FY21		23,501,816
FY21-22		
Unspent Balance from FY21		23,501,816
Revenue Distribution from State		4,670,679
Projected Expenditure		(6,267,067)
Transfer from CSS		0
Unspent Balance/(Deficit) at FY22		21,905,428
FY22-23		
Unspent from FY22		21,905,428
Revenue Distribution from State		3,565,193
Projected Expenditure		(4,702,585)
Transfer from CSS		0
Unspent Balance/(Deficit) at FY23		20,768,036



Innovation (INN) – provides funds to evaluate new approaches that increase access to the unserved and/or underserved communities. This component requires State approval (MHSOAC).

- **5% distribution from State**
- **Unallocated Funds revert after 3 years**

**MHSA FINANCIAL PROJECTIONS
WORKFORCE EDUCATION and TRAINING**

FY19-20	WET
Unspent from FY19	0
Revenue including Interest	0
*Expenditure	(1,685,826)
Transfer from CSS	1,685,826
Prudent Reserve Transfer (req)	0
Unspent Balance at FY20	0
FY20-21	
Unspent Balance from FY20	0
Revenue Distribution from State	0
Projected Expenditure	(1,685,826)
Transfer from CSS	1,685,826
Unspent Balance at FY21	0
FY21-22	
Unspent Balance from FY21	0
Revenue Distribution from State	0
Projected Expenditure	(1,685,826)
Transfer from CSS	1,685,826
Unspent Balance/(Deficit) at FY22	0
FY22-23	
Unspent from FY22	0
Revenue Distribution from State	0
Projected Expenditure	(1,685,826)
Transfer from CSS	1,685,826
Unspent Balance/(Deficit) at FY23	0

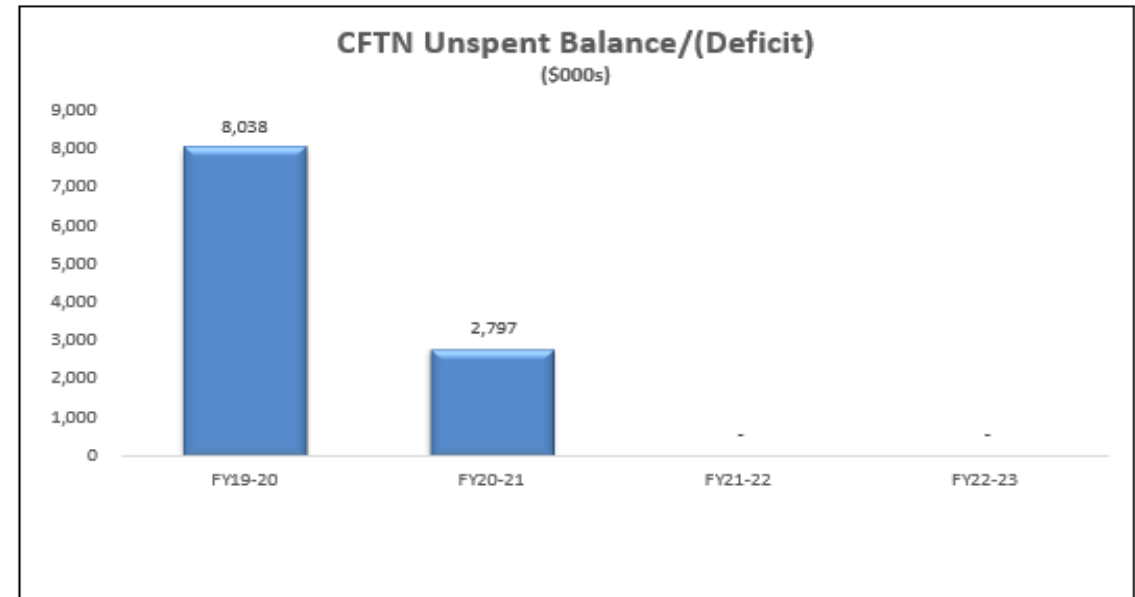
Workforce, Education and Training (WET)—provides funds to improve and build the capacity of the mental health workforce.

- **Activities funded through CSS Component**

Initial WET one-time funding has been expended, BHSD has continued to sustain the WET plan from CSS (supported by stakeholders)

**MHSA FINANCIAL PROJECTIONS
CAPITAL FACILITIES AND TECHNOLOGICAL NEEDS**

FY19-20		CFTN
Unspent from FY19		11,642,662
Revenue including Interest		207,308
*Expenditure		(3,811,902)
Transfer from CSS		0
Prudent Reserve Transfer (req)		0
Unspent Balance at FY20		8,038,068
FY20-21		
Unspent Balance from FY20		8,038,068
Revenue Distribution from State		0
Projected Expenditure		(5,241,566)
Transfer from CSS		0
Unspent Balance at FY21		2,796,502
FY21-22		
Unspent Balance from FY21		2,796,502
Revenue Distribution from State		0
Projected Expenditure		(5,241,566)
Transfer from CSS		2,445,064
Unspent Balance/(Deficit) at FY22		0
FY22-23		
Unspent from FY22		0
Revenue Distribution from State		0
Projected Expenditure		(1,241,566)
Transfer from CSS		1,241,566
Unspent Balance/(Deficit) at FY23		0



Capital Facilities and Technological Needs (CFTN)—provides funds for building projects and increasing technological capacity to improve mental illness service delivery.

- **Activities funded through CSS Component**
- **Capital Facility and Technological Need**
 - CFTN Support Staff (Electronic Health Record and Data Warehouse, Computer Learning Centers)
 - Headspace Sites

MHSA FINANCIAL PROJECTIONS
Prudent Reserve

FY19-20	PR
Unspent from FY19	20,749,476
Revenue including Interest	0
*Expenditure	0
Transfer from CSS	0
Prudent Reserve Transfer (req)	(2,045,839)
Unspent Balance at FY20	18,703,637
FY20-21	
Unspent Balance from FY20	0
Revenue Distribution from State	0
Projected Expenditure	0
Transfer from CSS	0
Unspent Balance at FY21	18,703,637
FY21-22	
Unspent Balance from FY21	0
Revenue Distribution from State	0
Projected Expenditure	0
Transfer from CSS	0
Unspent Balance/(Deficit) at FY22	18,703,637
FY22-23	
Unspent from FY22	0
Revenue Distribution from State	0
Projected Expenditure	0
Transfer from CSS	0
Unspent Balance/(Deficit) at FY23	18,703,637

It's a rare scenario that counties access Prudent Reserve (PR) . Accessing PR is only allowed during a huge economic downturn that causes MHSA revenue drops below a threshold. It has to be approved by DHCS. This COVID emergency access was a first and it required passage of a AB 81. There are only two reasons that you can access the PR.

- 1) Reduce your Prudent Reserve balance if currently over the PR max. CSS/PEI ratio rules apply. Refer to : Mental Health Services Act - Implementation of W&I Code 2892 and 5892.1 (ca.gov)

- 2) For 20/21 COVID Emergency. No CSS/PEI ration required. Refer to guidelines: BHIN 20-040 - MHSA flexibilities due to public health emergency_final. (ca.gov)

MHSA FINANCIAL PROJECTIONS

Prudent Reserve Balance is \$18.7M and barely enough to cover 2 months of activities

FY19-20	CSS	PEI	INN	WET	CFTN	TOTAL	PR
Unspent from FY19	43,590,751	21,265,183	24,061,453	0	11,642,662	100,560,049	20,749,476
Revenue including Interest	65,542,745	16,473,632	4,711,781	0	207,308	86,935,465	
*Expenditure	(83,814,232)	(19,566,660)	(2,001,758)	(1,685,826)	(3,811,902)	(110,880,378)	
Transfer from CSS	(1,685,826)	0	0	1,685,826	0	0	
Prudent Reserve Transfer (req)	1,547,519	498,320	0	0	0	2,045,839	(2,045,839)
Unspent Balance at FY20	25,180,957	18,670,475	26,771,476	0	8,038,068	78,660,975	18,703,637
FY20-21							
Unspent Balance from FY20	25,180,957	18,670,475	26,771,476	0	8,038,068	78,660,975	
Revenue Distribution from State	73,224,634	18,305,007	4,818,077	0	0	96,347,718	
Projected Expenditure	(85,013,081)	(23,628,545)	(8,087,736)	(1,685,826)	(5,241,566)	(123,656,754)	
Transfer from CSS	(1,685,826)	0	0	1,685,826	0	0	
Unspent Balance at FY21	11,706,685	13,346,937	23,501,816	0	2,796,502	51,351,939	18,703,637
FY21-22							
Unspent Balance from FY21	11,706,685	13,346,937	23,501,816	0	2,796,502	51,351,939	
Revenue Distribution from State	71,027,481	17,756,870	4,670,679	0	0	93,455,029	
Projected Expenditure	(85,013,081)	(23,628,545)	(6,267,067)	(1,685,826)	(5,241,566)	(121,836,085)	
Transfer from CSS	(4,130,890)	0	0	1,685,826	2,445,064	0	
Unspent Balance/(Deficit) at FY22	(6,409,806)	7,475,263	21,905,428	0	0	22,970,884	18,703,637
FY22-23							
Unspent from FY22	(6,409,806)	7,475,263	21,905,428	0	0	22,970,884	
Revenue Distribution from State	54,168,818	13,542,204	3,565,193	0	0	71,276,215	
Projected Expenditure	(85,013,081)	(23,628,545)	(4,702,585)	(1,685,826)	(1,241,566)	(116,271,603)	
Transfer from CSS	(2,927,392)	0	0	1,685,826	1,241,566	0	
Unspent Balance/(Deficit) at FY23	(40,181,461)	(2,611,078)	20,768,036	0	0	(22,024,503)	18,703,637

*FY19-20 updated to reflect annual RER expenditure

FY19-20 includes the transfer in excess of the PR maximum threshold to CSS and PEI

FY21-23 Revenue Projection from Mike Geiss' November 2020 CIBHS presentation

Expense projections reflect the FY21-23 Plan submission, which was tempered for expected spend and vacancy rates. Contract MFOs and approved MHSA positions are higher.

FY2022 MHSA BUDGETS AND ESTIMATED EXPENDITURES

ROLE OF MHSA Stakeholder Leadership Committee Member

Develop a deeper understanding of the strengths and needs in the systems of care and community stakeholders

Identify and prioritize the most important problems to solve with available resources

Participate, engage, collaborate in validation of FY2022 MHSA draft plan.

NEXT STEPS

ACTIVITIES	Purpose
Community Needs Assessment	<ul style="list-style-type: none"> • Surveys • Virtual Listening Sessions/Town Hall meetings • Review of Programs
MHSA SLC INN Subcommittee Friday, January 29, 2021 2:00PM – 3:00PM	<ul style="list-style-type: none"> • Innovation (INN) Projects Timeline • Update on existing INN Projects, Highlights • INN Idea Selection Process/New Project Development
MHSA SLC Planning Session #1 Thursday, February 11, 2021 3:00PM – 5:00PM	<ul style="list-style-type: none"> • Children, Youth and Families Program Highlights and Discussion
MHSA SLC Planning Session #2 Tuesday, February 16, 2021 3:30PM - 5:30PM	<ul style="list-style-type: none"> • Adult/Older Adult, LGBTQ, Client/Consumer Program Highlights and Discussion
MHSA SLC Planning Session #3 Friday, February 19, 2021 3:00PM – 5:00PM	<ul style="list-style-type: none"> • Criminal Justice System, Housing, Workforce Education & Training, Suicide Prevention/Suicide and Crisis Services Program Highlights and Discussion
MHSA SLC Planning Session #4 Friday, March 5, 2021 3:00PM- 5:00PM	<ul style="list-style-type: none"> • Summary of Findings, Discussion and Next Steps

Please provide your feedback on today's meeting:

https://www.surveymonkey.com/r/Jan25_SLC_Feedback





Comments & Questions

THANK YOU

For questions, additional information or other concerns, contact:

Evelyn Tirumalai, MPH - Senior Manager, MHSA Administration

Evelyn.Tirumalai@hhs.sccgov.org

1-408-401-6117

