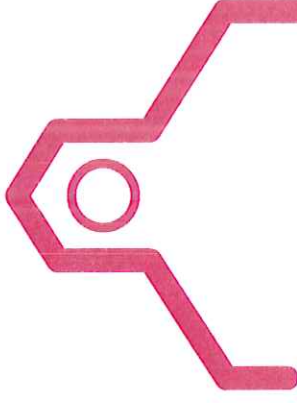


AN UNCOMMON OPPORTUNITY

Changing a child, a community, a country

Educare of California at Silicon Valley, like Educare schools elsewhere in America, will operate using resources available from Head Start, Early Head Start, FIRST 5, local schools, State child care, private sources and more.



Our key private and public partners in the programmatic design and capital campaign include:

- FIRST 5 Santa Clara County
- City of San Jose
- Santa Clara County Office of Education
- Silicon Valley Education Foundation
- Franklin-McKinley School District
- Silicon Valley Leadership Group
- Franklin-McKinley Children's Initiative
- The David and Lucile Packard Foundation
- Catholic Charities of Santa Clara County
- WestEd
- The Buffett Early Childhood Fund
- Quince of Prevention Fund
- Bounce Learning Network
- County of Santa Clara

We need additional partners and welcome your participation.

To learn how you can help to make Educare of California at Silicon Valley a reality,

**Jolene Smith**  
FIRST 5 Santa Clara County, Executive Director  
408.260.3701

# EDUCARE

Rarely does a single project present the opportunity to change the life trajectories for hundreds of children, impact an entire community and influence public policy at the state and national levels.

**Educare of California at Silicon Valley is that opportunity.**



**"Our goal is for all children in poverty to succeed—not just at school, but in life."**

SUSIE BUFFETT  
CHAIR  
THE BUFFETT EARLY CHILDHOOD FUND

**Educare anchor funders elsewhere:**

- Irving Harris Foundation
- Buffett Early Childhood Fund
- George Kaiser Family Foundation
- Bill & Melinda Gates Foundation
- J.B. & M.K. Pritzker Family Foundation
- Chambers Family Fund
- United Way of Miami-Dade
- Inasmuch Foundation
- Sunshine Lady Foundation
- William & Joan Allford Foundation
- Mary Cohen
- Bayou District Foundation
- Gustafson Family Foundation
- Whiteman Foundation
- IBIS Foundation





## Equal opportunity is the great American promise

As a country, America looks to education as a road to equal opportunity – a way to gain knowledge, develop skills, and learn behaviors that prepare young children to succeed as students, workers and citizens throughout life. Family and community have the greatest influence on children, however, education is the way we, as a nation, seek to level the playing field for all children and families. Education is the way we try to fulfill the great American promise and prepare our youngest children to succeed in an increasingly competitive global economy.

But here is the sad reality. Too many children start school already behind. What's worse, many will never catch up.

**By the time a child enters kindergarten**, she has already been learning for 5 or 6 years because children are born learning. Our society largely fails to acknowledge this. Instead, we wait to respond until the first day of school and that is years too late. The achievement gap we struggle to narrow in elementary school and fail far too often to close in high school, begins to take root when children are as young as 18 months old.

**Educare is a bold vision to change the life trajectories of children and families in Silicon Valley and across America, early in their lives.**

By aiming to prevent the student achievement gap before it develops, **Educare of California at Silicon Valley** will ensure that disadvantaged young children—instead of starting school already behind—arrive at kindergarten on par with children across the country. But even more broadly, Educare will aim to redefine education in America to embrace the concept that the first five years of life are the first five years of learning.

**Educare of California at Silicon Valley will build on the history and experience of Head Start and Early Head Start, FIRST 5 Power of Preschool and other early childhood programs.** Educare uses science and research to implement early learning experiences that produce results and positive outcomes for at-risk children. On-going research at existing Educare schools demonstrates that Educare works.

We have an impressive cadre of partners who are collaborating to make Educare a reality in the heart of Silicon Valley. As hundreds of other business leaders and philanthropists have witnessed in more than a dozen communities across the country, investing in Educare makes sense. As a state of the art, high-quality learning center, Educare will serve as a “showroom” of quality and demonstrate to policymakers, business leaders and others what it really takes to narrow the achievement gap. Investing in Educare pays impressive dividends—and, it's the “right” thing to do. After all, the great American promise of equal opportunity is a promise worth keeping.

### Will you join us?

*Carl Guardino*

Carl Guardino  
President and CEO  
Silicon Valley Leadership Group

*John Porter*

John Porter  
Superintendent  
Franklin-McKinley School District

*Jolene Smith*

Jolene Smith  
Executive Director  
FIRST 5 Santa Clara County

*Charles West*

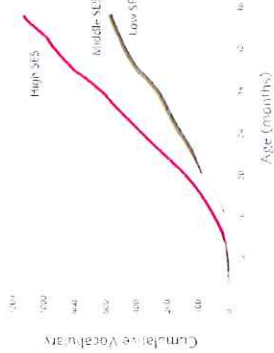
Charles West  
Superintendent of Schools  
Santa Clara County Office of Education



## In the United States today

- Research shows that vocabulary, literacy and school readiness can predict later success in school and in life. But differences in vocabulary growth between children in low and high socioeconomic households begin to appear as early as 18 months.
- 1.1 million: Number of words children in high-income homes hear in a year
  - 6 million: Number of words children in working-class homes hear in a year
  - 3 million: Number of words children in very low-income homes hear in a year
- At-risk children who don't get quality early care and education are:
- 25% more likely to drop out of school
  - 40% more likely to become teen parents
  - 50% more likely to be placed in special education
  - 60% more likely to never attend college
  - 70% more likely to be arrested for a violent crime

## Disparities in Early Vocabulary Growth



SES = Socioeconomic status

## A Promising Solution Independent evaluation confirms Educare is closing the gap

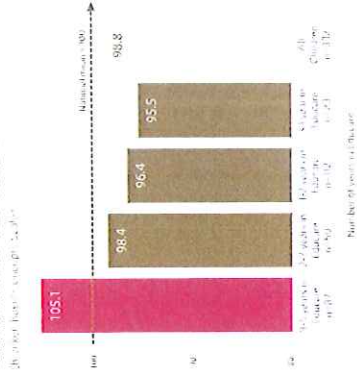
Research shows the achievement gap between children from low-income, distressed environments and their more advantaged peers begins early and persists throughout life. Narrowing that gap requires intensive, intentional interventions beginning in a child's earliest months and years.

Educare of California at Silicon Valley will join a growing network of Educare schools across the nation that are showing dramatic results in geographically and culturally diverse communities. Specifically, University of North Carolina researchers have found:

- Children who enroll in Educare as infants or toddlers and receive a full five-year dose of the model enter kindergarten on par with their middle-income peers. Plus, they arrive with school-readiness and vocabulary scores above the national average, which is considerably higher than typical children from low-income families in national studies.
- More than 85% of students have social skills rated as meeting or exceeding the level needed to do well in school.
- On widely used observations of classroom practices, Educare classrooms receive high scores.

## Children who spend more years in Educare emerge better prepared for kindergarten

2009-2009 School Readiness Score



Source: Heckman, James. *The Heckman Equation*, slide 14. Available at <http://www.heckmanequation.org/>

## Educare's sphere of influence

Educare centers in Illinois, Nebraska, Oklahoma, Kansas, Colorado, Washington, Florida and Maine have helped thousands of children by leveraging greater public sector investment in early learning at the local and state levels. Creating an Educare school in Silicon Valley will provide new and far-reaching opportunities to strengthen public policies and investments in effective programs at the local, state and federal level.



## A coast-to-coast network\*



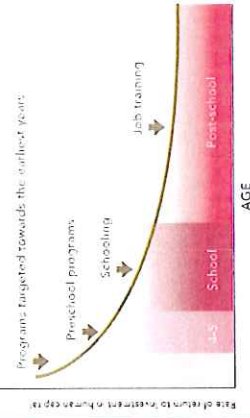
- Operational**
- CHICAGO
  - OHAMA (TWO)
  - MILWAUKEE
  - TULSA (TWO)
  - DANVER
  - MILWAUKEE
  - OKLAHOMA CITY
  - SEATTLE
  - KANSAS CITY, KS
  - MAINE
- Not yet Operational**
- ARIZONA (PHOENIX)
  - WEST DUBUQUE, IL
- \*% of February 2011

## A look at Educare of California at Silicon Valley

- 158,000 children younger than 6 years old in Santa Clara County<sup>1</sup>
- 99,000 children younger than 3 years old in Santa Clara County<sup>1</sup>
- 90% of the children in Franklin-McKinley School District qualify for free or reduced lunch
- 75% percent of the students in Franklin-McKinley School District are English language learners
- The Santee neighborhood, where Educare would be located, is one of the most impoverished communities in the region. Santee Elementary School performed in the bottom 20% of all school statewide.
- Despite these daunting challenges, the families within the Santee community have stepped forward to create the Franklin-McKinley Children's Initiative in an effort to create an inclusive, safe, healthy and caring community where families and service providers recognize their interdependence as they work collaboratively toward sustaining an environment where children and adults thrive.

<sup>1</sup>Santa Clara County data from U.S. Census

## RATES OF RETURN PER DOLLAR INVESTED



Source: Heckman, James. *The Heckman Equation*, slide 14. Available at <http://www.heckmanequation.org/>

A NEW WAY OF DOING BUSINESS

**Closing the achievement gap**

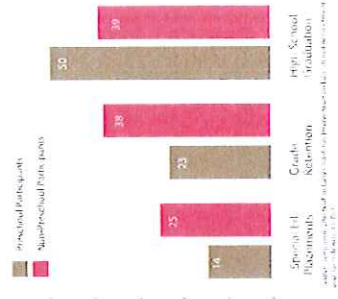
When Educare of California at Silicon Valley breaks ground in 2012, it will signal the beginning of a dramatic shift of thinking in an area of Silicon Valley where 90 percent of the children are poor enough to qualify for free or reduced lunch.

Located just south of Interstates 280 and 680 and just east of Highway 101, the Educare facility will be located on the campus of Santeo Elementary in the Franklin-McKinley School District. When fully operational, the Educare facility will provide quality early learning opportunities for approximately 200 infants, toddlers, preschoolers and their families.

Numerous public and private partners are working together to make Educare of California at Silicon Valley a reality. The project is being driven by The David and Lucile Packard Foundation, First 5 California, FIRST 5 Santa Clara County, Franklin-McKinley School District, Santa Clara County Office of Education, WestEd, Silicon Valley Leadership Group, Bounce Learning Network and Buffett Early Childhood Fund.

When Educare of California at Silicon Valley opens in 2013, it will be a high-quality early learning center for infants, toddlers and preschoolers. The children of families facing the toughest odds will be prepared to start kindergarten engaged, healthy, eager to learn and ready to succeed.

Chicago Child Parent Center  
Preschool Participants Fare Better



**OPENING FOR THE 2013-2014 SCHOOL YEAR: EDUCARE OF CALIFORNIA AT SILICON VALLEY**

Private and public funding will help to create an effective, sustainable early education program for children and families who need it most.

**THE STUDENTS**

- Children of low-wage-earning families, teen parents and parents in job training are eligible to apply.

- 200 children from birth to 5 are given individualized developmentally appropriate instruction by highly educated teachers in small classroom settings.

- Social, emotional and educational skills are taught so that children can enter elementary school on the same level as children from higher social-economic families

**THE FAMILIES**

- Families learn how to support their children's education and development.

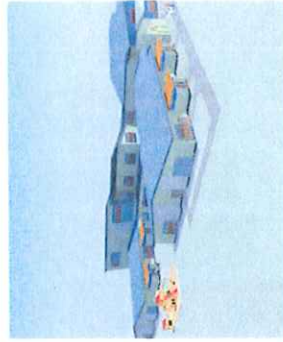
- Receive referrals to family support services

**THE SCHOOL**

- Provides full-day, full-year, research based programming.
- 34,000-square-foot facility that has state of the art classrooms, a family resource center and a teacher training center that includes classroom observation rooms.

**THE COMMUNITY**

- Space for community gatherings.
- Offers family engagement educational opportunities and school events throughout the year.



Architectural rendering by Sugimura Finney

