

Alum Rock Counseling Center & EMQ FamiliesFirst
Prevention and Early Intervention Program
Central Region- Santa Clara County



EMQ FamiliesFirst

Prevention Early Intervention Program

Program Overview

The Santa Clara County Mental Health Department has identified the Alum Rock Counseling Center and EMQ FamiliesFirst to work collaboratively with local school districts to deliver Prevention and Early Intervention services to students and their families.

- Participating school districts in the Central Region of Santa Clara County:
 - Campbell Union School District
 - Oak Grove School District
 - San Jose Unified School District
 - Luther Burbank School District

- Community Hub Approach
 - 5 middle schools will serve as hubs, serving the students and families of the schools and their feeder elementary schools
 - 15 elementary schools to be included

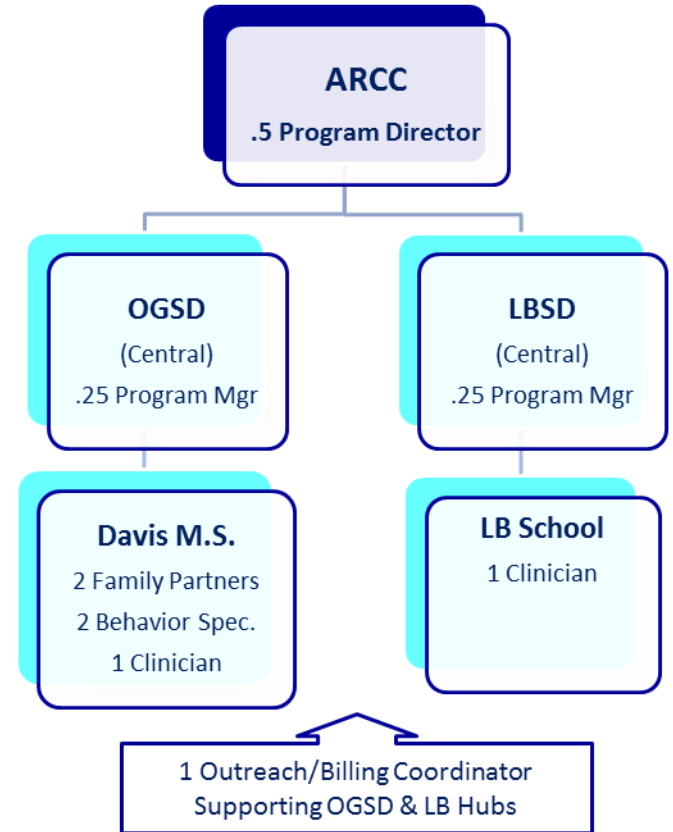
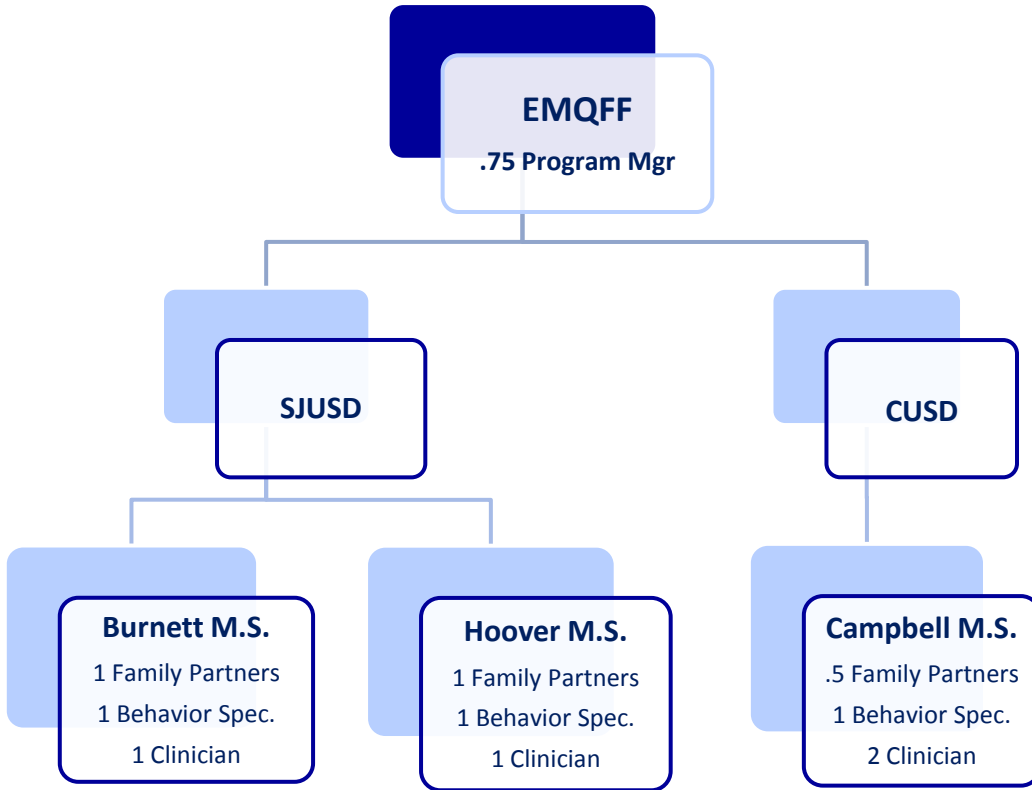
- 4 Tiers of **Evidence-Based Services**
 - Family Workshops
 - Case Management and linkage to resources
 - Behavioral Support Services- in the schools and in the community
 - Individual and Family Therapy

- Full service delivery to launch in January 2013
 - Three year program

PEI Program Coverage

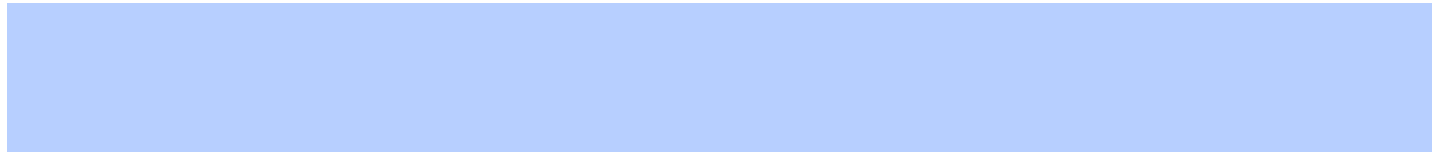
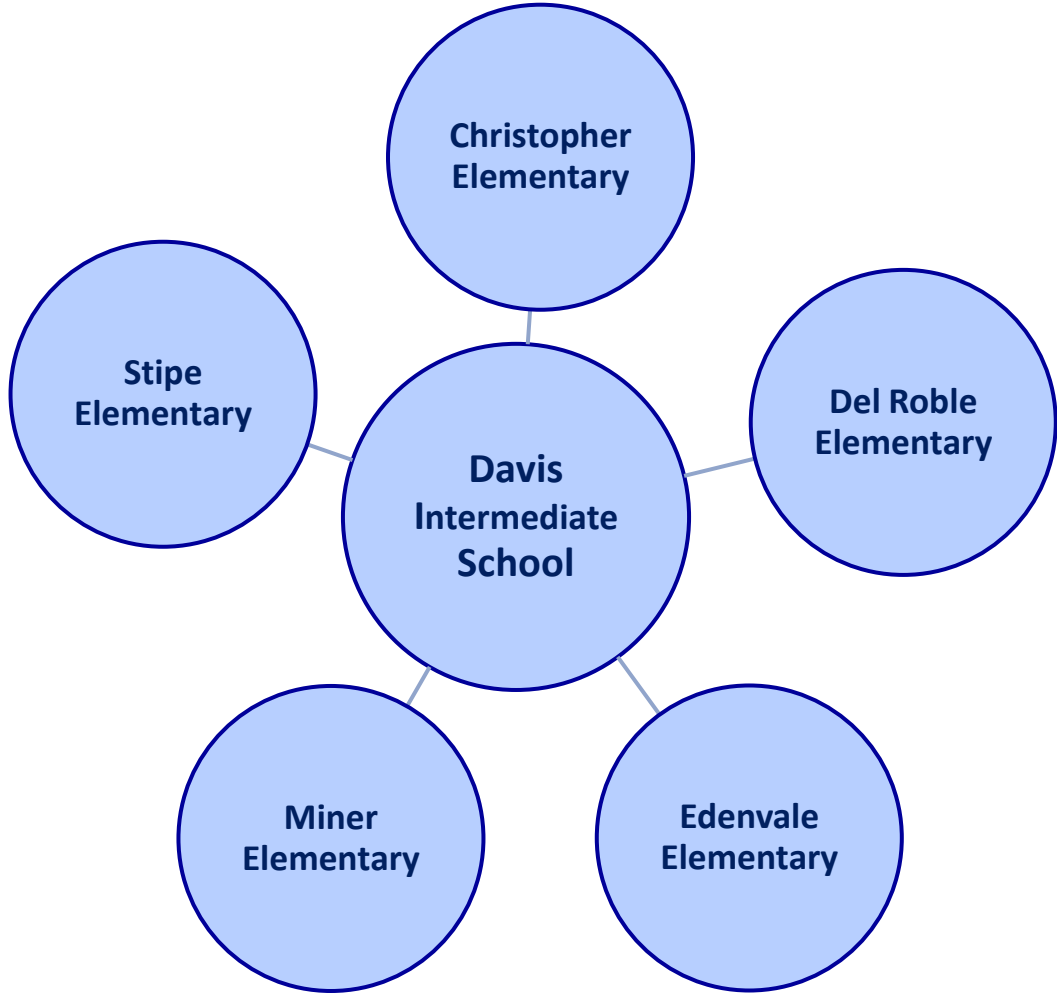
Total ARCC Staff: 8

Total EMQFF Staff: 10.25



Davis Intermediate School HUB

Oak Grove School District

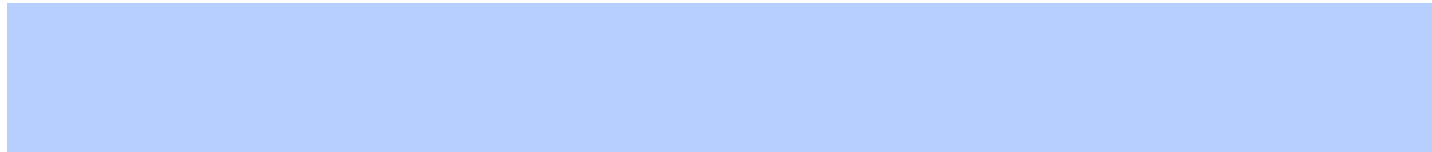


Luther Burbank School HUB

Luther Burbank School District

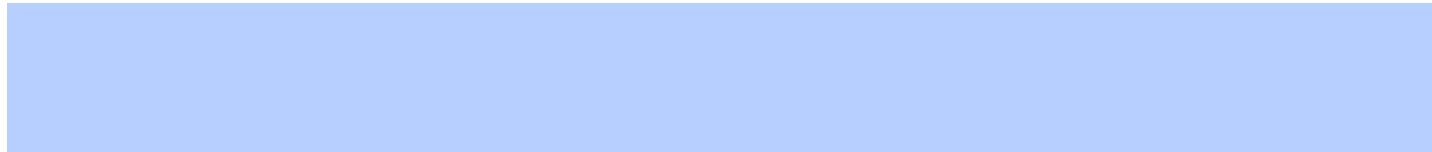
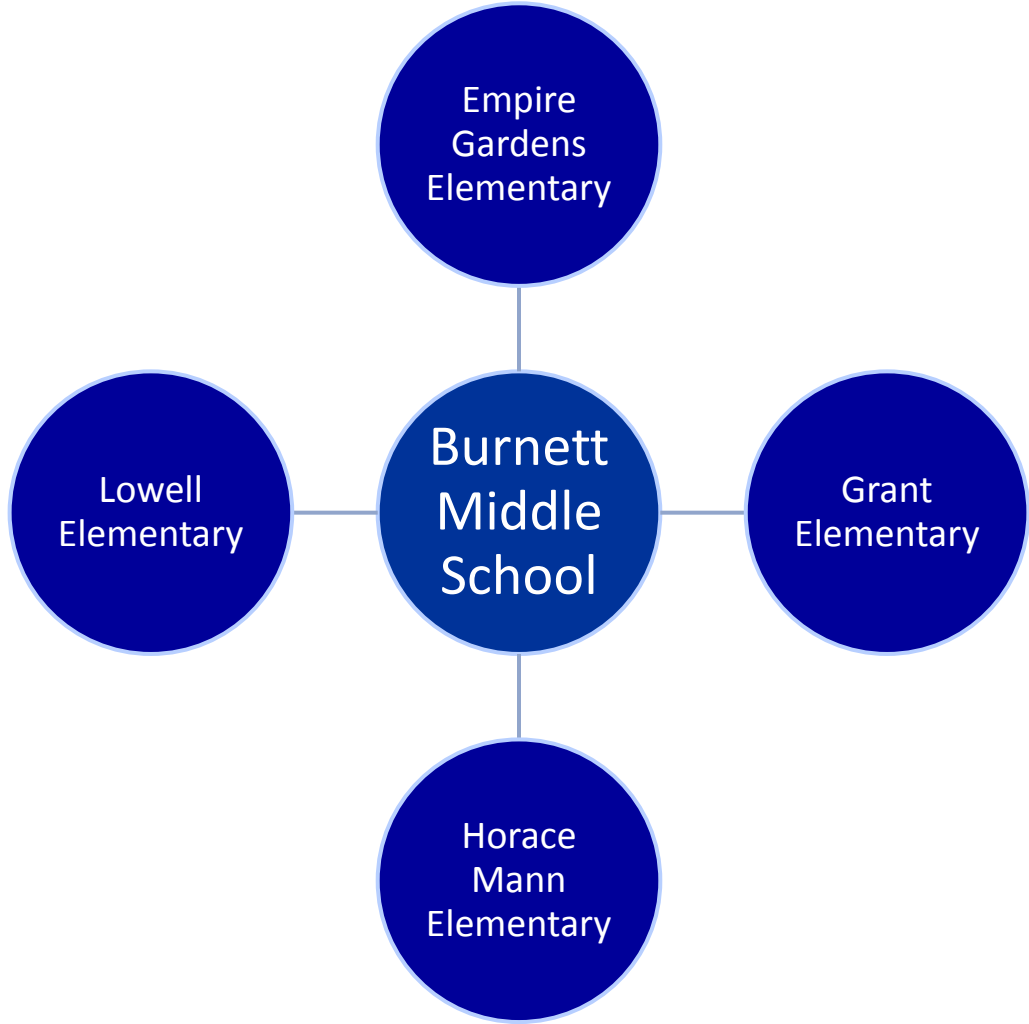


Luther Burbank School District is a one-school district that hosts K-8th grades.



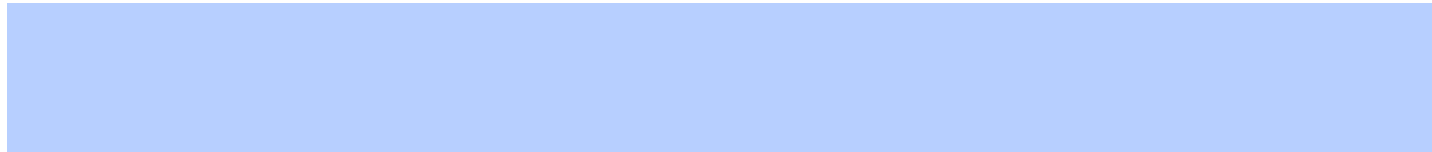
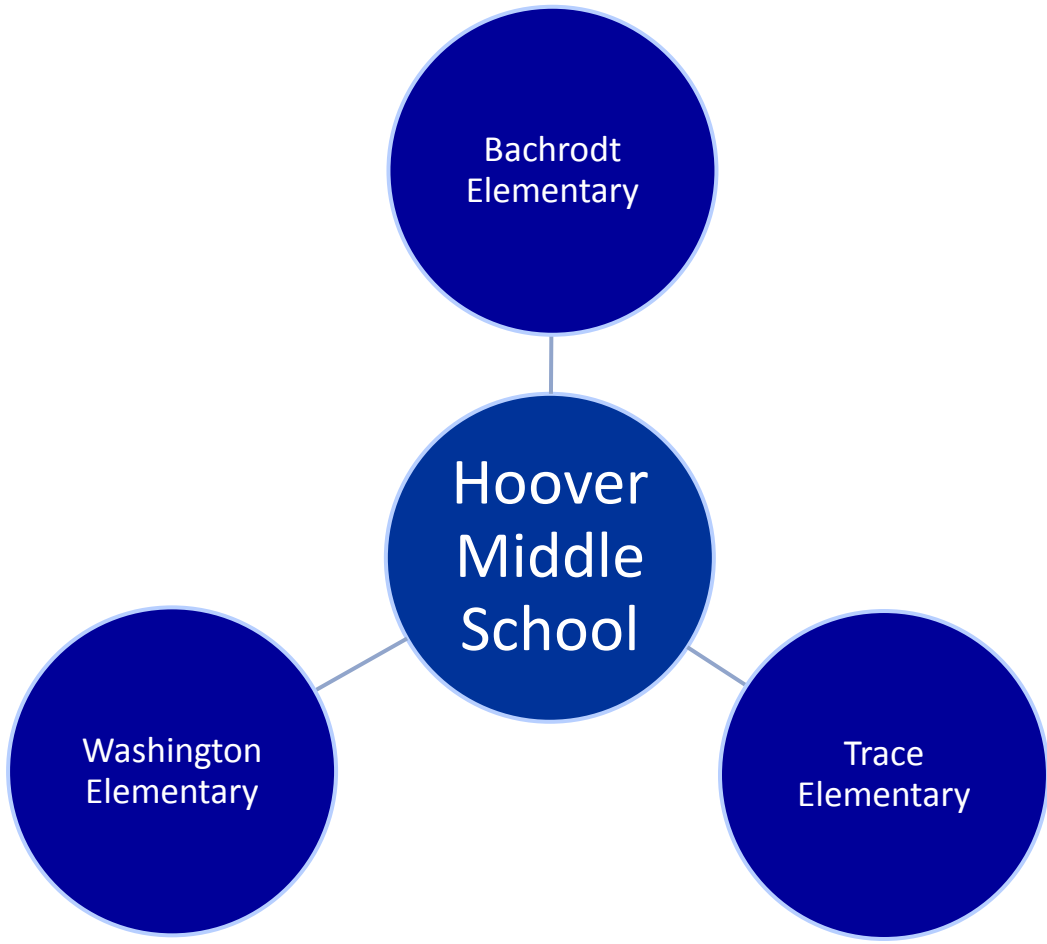
Burnett Middle School HUB

San Jose Unified School District



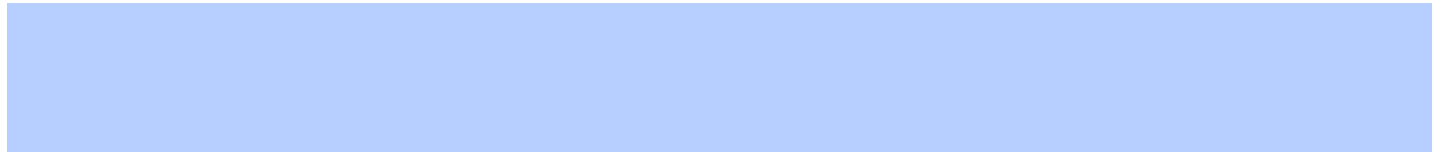
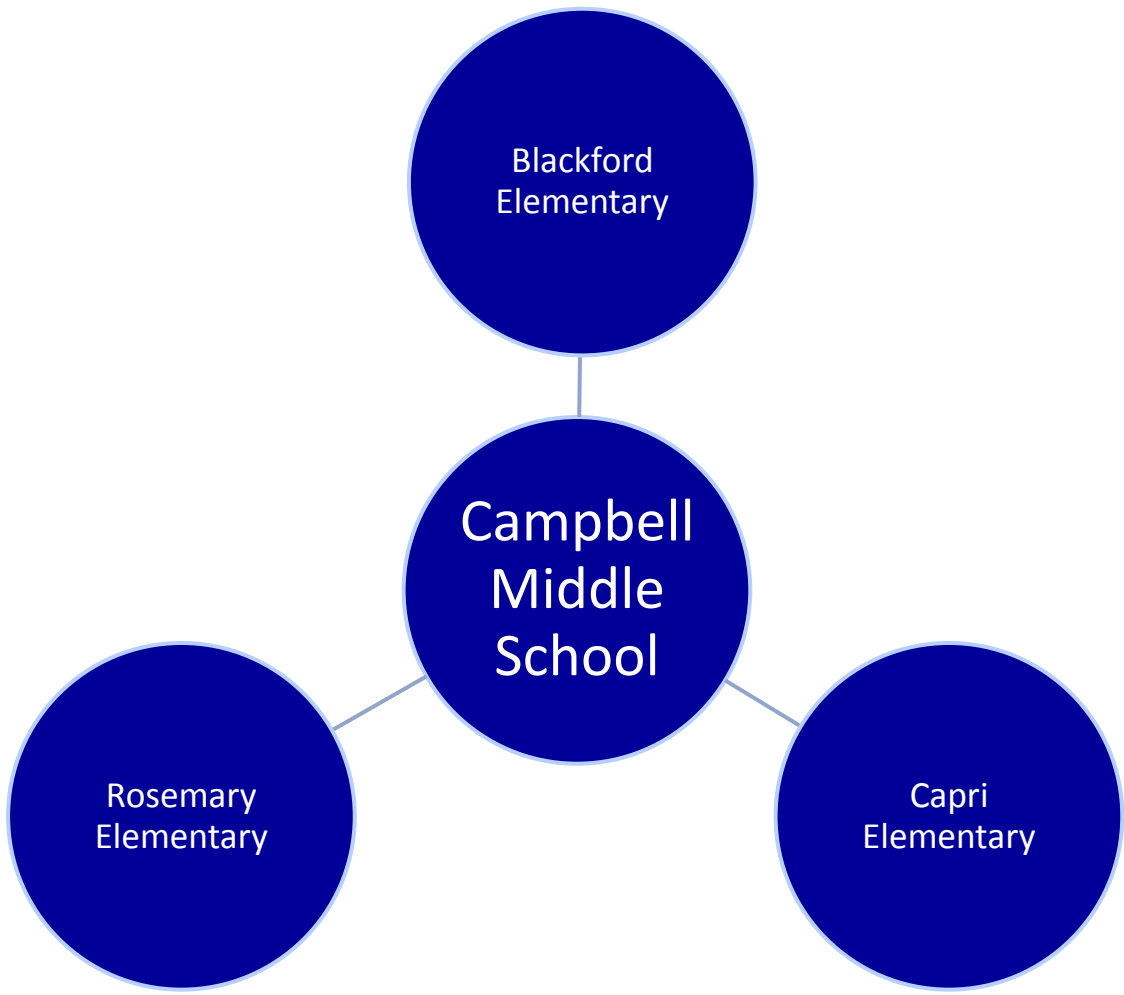
Hoover Middle School HUB

San Jose Unified School District

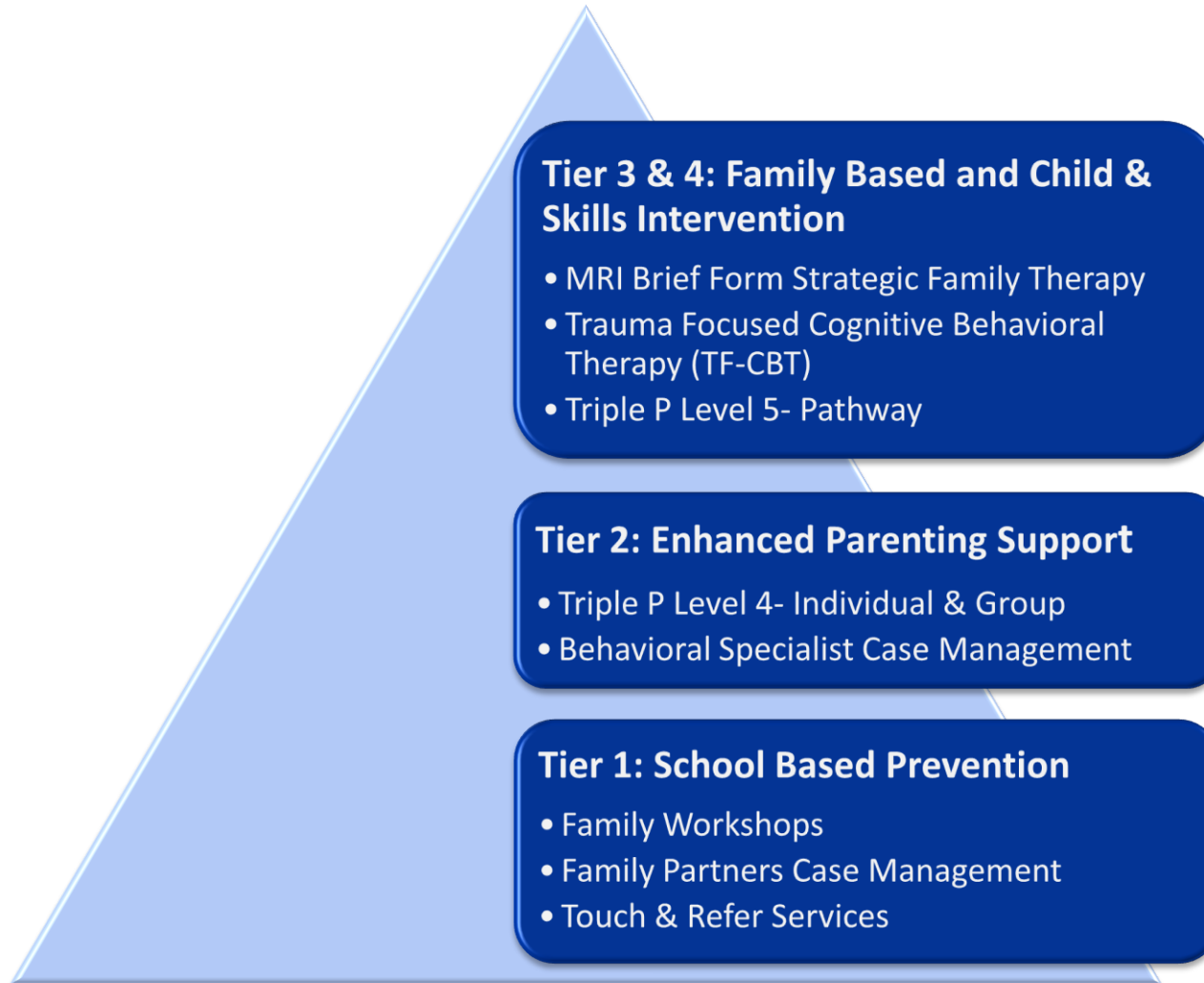


Campbell Middle School HUB

Mount Pleasant School District



Service Delivery Strategies



Program Staff & Evidence Based Practices

Clinical Program Manager
Program oversight, supervision, staff management

Family Partner

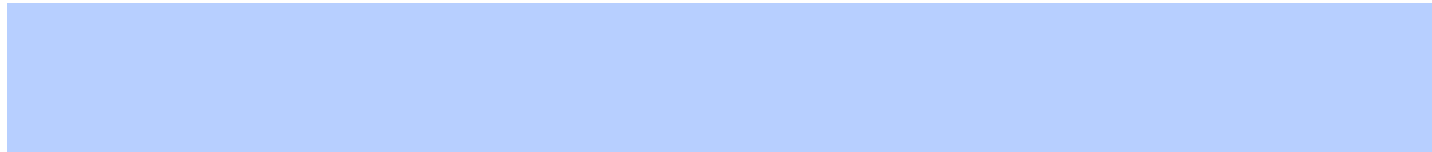
- Strengthening Families Workshops
- Case Management
- Touch & Refer

Behavior Specialist

- Strengthening Families Workshops
- Triple P Level 4
- Behavioral-Based Case Management

Clinician

- Clinical Case Management
- Brief Form Strategic Family Therapy
- Trauma Focused Cognitive Behavioral Therapy
- Triple P Level 5



Implementation Plan

Snapshot



Program Prep

- Develop referral process
- Establish billing procedures
- Establish advisory committee
- Identify documentation procedures
- Identify O&E requirements
- Develop Workshop Schedule

July-Nov

Personnel Plan

- Identify need
- Recruitment
- Interviews & selections
- Onboarding
- Team placement

Aug-Oct

Staff Preparation

- Cross org training
- Internal controls
- Program specific training
- Resource identification

Oct-Nov

Outreach & Marketing

- Collateral development
- Develop presentation
- Identify Community Events
- Establish school site presentations
- Promote workshops
- Establish school site contacts

Nov-Dec

Service Delivery

- November "Soft" Launch
- January 1 Full Launch

Questions & Comments



EMQ FamiliesFirst