

RISE: Recognize Intervene Support Empower

# Sexual Orientation, Gender Identity and Expression Core Training

Supporting LGBTQI+ and Gender-expansive community members.

A 6-hour training provided by the County of Santa Clara Behavioral Health Services Department through support from the RISE Program of the Los Angeles LGBT Center.

## COURSE DESCRIPTION

This foundational training, critical to all behavioral health staff, is strengths-based, evidence-informed, and provides best practices for supporting LGBTQI+ community members. This includes principles for effective communication. Due to bias, stigma, and misinformation, the LGBTQI+ community is under-served in all healthcare settings, including in our own Behavioral Health System. This training provides the necessary tools that will allow you to intervene during instances of harassment and discrimination, and create affirming environments.

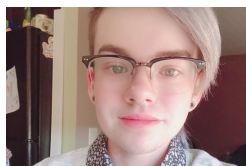
## TRAINING OBJECTIVES

- Differentiate between Sex Assigned at Birth, Gender Identity, Gender Expression, and Sexual Orientation.
- Identify barriers and support towards permanency for LGBTQI+ community members.
- Describe guiding principles for managing SOGIE information.

## TRAINERS



Isabella Trinidad Garcia, MPH is the Management Analyst for The County of Santa Clara Behavioral Health Services Department Q Corner program. She has over a decade of experience with community education regarding health and wellness.



Emmett Marsh is the Mental Health Peer Support Worker, also with The Q Corner Program. He has a background in Psychology, and a love for working with the LGBTQI+ community with a focus on providing transition resources and support for community.

Both trainers are certified to train this curriculum by the LA LGBT Center.  
Email [theqcorner@hhs.sccgov.org](mailto:theqcorner@hhs.sccgov.org) with questions.

Santa Clara County Behavioral Health Services Department (SCCBHSD) is approved by the CA Association of Marriage and Family Therapist (CAMFT) to sponsor continuing education for Santa Clara County LMFTs, LCSWs, LPCCs, and/or LEPs. SCCBHSD maintains responsibility for this program/course and its content. This course meets the qualifications for 6 hours of continuing education for LMFTs, LCSWs, LPCCs, and/or LEPs, as required by the CA Board of Behavioral Sciences (BBS). CAMFT is the BBS recognized approval agency-Provider # 131775. SCCBHSD also is approved by CA Consortium of Addiction Programs and Professionals (CCAPP) and CA Association for Alcohol/Drug Education (CAADE) and the Board of Registered Nursing to provide CEUs. Lunch and scheduled breaks during the training do not count towards CEU credit

## LOCATION:

Zoom - login details to be provided. *Full visual (webcam) and audio participation required.*

## DATE OPTIONS:

- Thursday, January 7 & Friday, January 8, 2021
- Thursday, February 11 & Friday, February 12, 2021
- Thursday, April 1 & Friday, April 2, 2021
- Thursday, April 29 & Friday, April 30, 2021

9:30 am - 1:00 pm  
both days, for all dates  
*Registration begins at 9:00 am*

**6 CEU Credits  
are available!**

This training is free!  
Register online at:  
[sccLearn.sccgov.org](https://sccLearn.sccgov.org)

Target Audience:  
Santa Clara County Behavioral Health Services staff and contracted agencies.

Please contact Learning Partnership if you need accommodations for one of our trainings at 408-792-3900.

You now can download/print your own CEU Certificates online at sccLearn 2-4 weeks after the training date.

Do you have a Grievance? Please call the Learning Partnership at 408-792-3900.