

OVERVIEW OF THE OFFICE OF SUPPORTIVE HOUSING

Consuelo Hernandez: Director, County of Santa Clara Office of Supportive Housing

Shelly Barbieri: Supportive Housing System Program Manager III, County of Santa Clara Office of Supportive Housing

Mission

The Office of Supportive Housing's (OSH) mission is to increase the supply of housing and supportive housing that is affordable and available to extremely low income and /or special needs households. OSH supports the County mission of promoting a healthy, safe, and prosperous community by ending and preventing homelessness.



December 2014, County Board of Supervisors

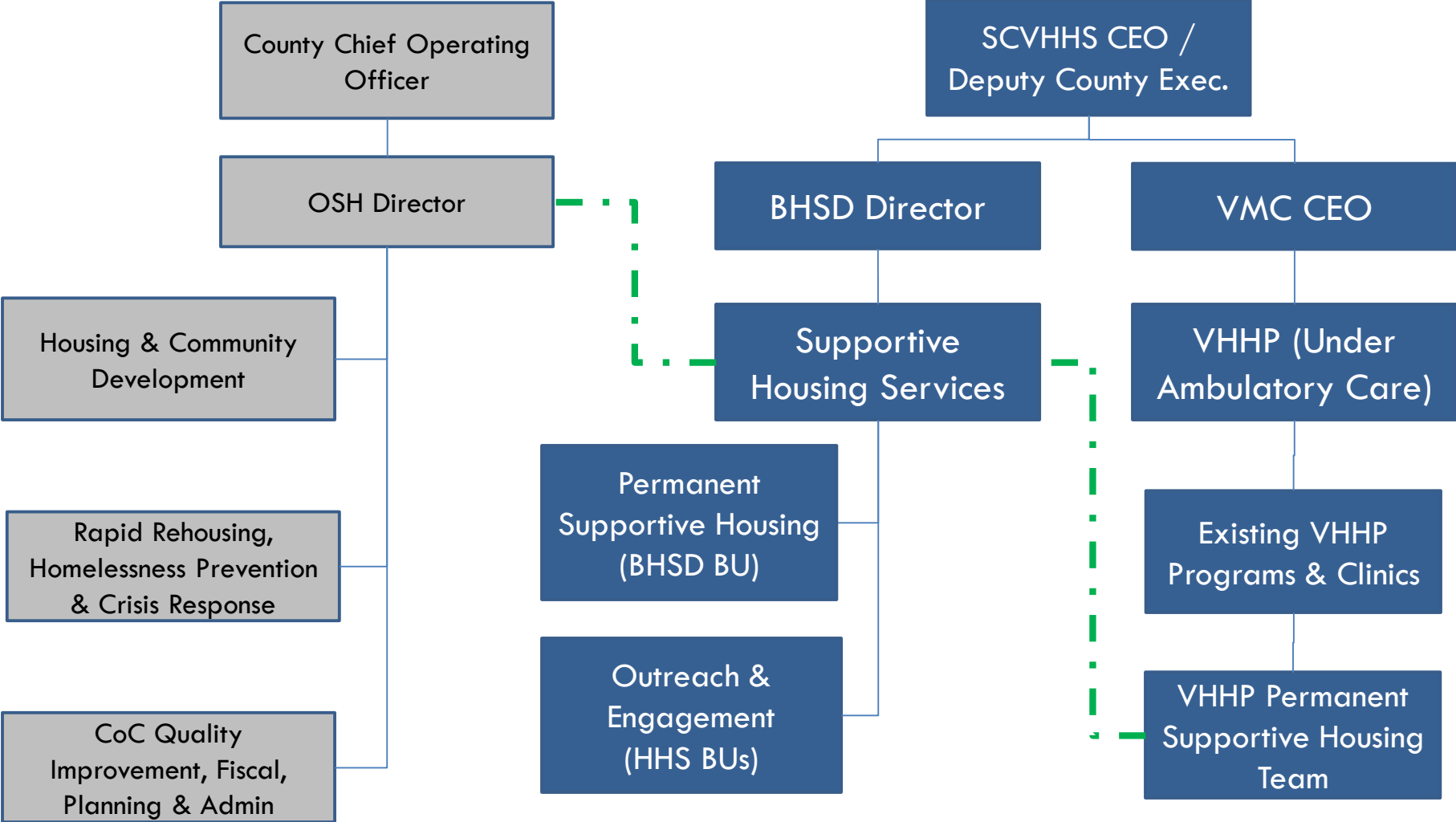
3

Housing special needs populations is a county service and therefore the County must take an active role in developing, financing and supporting various types of affordable housing for the populations that we serve.

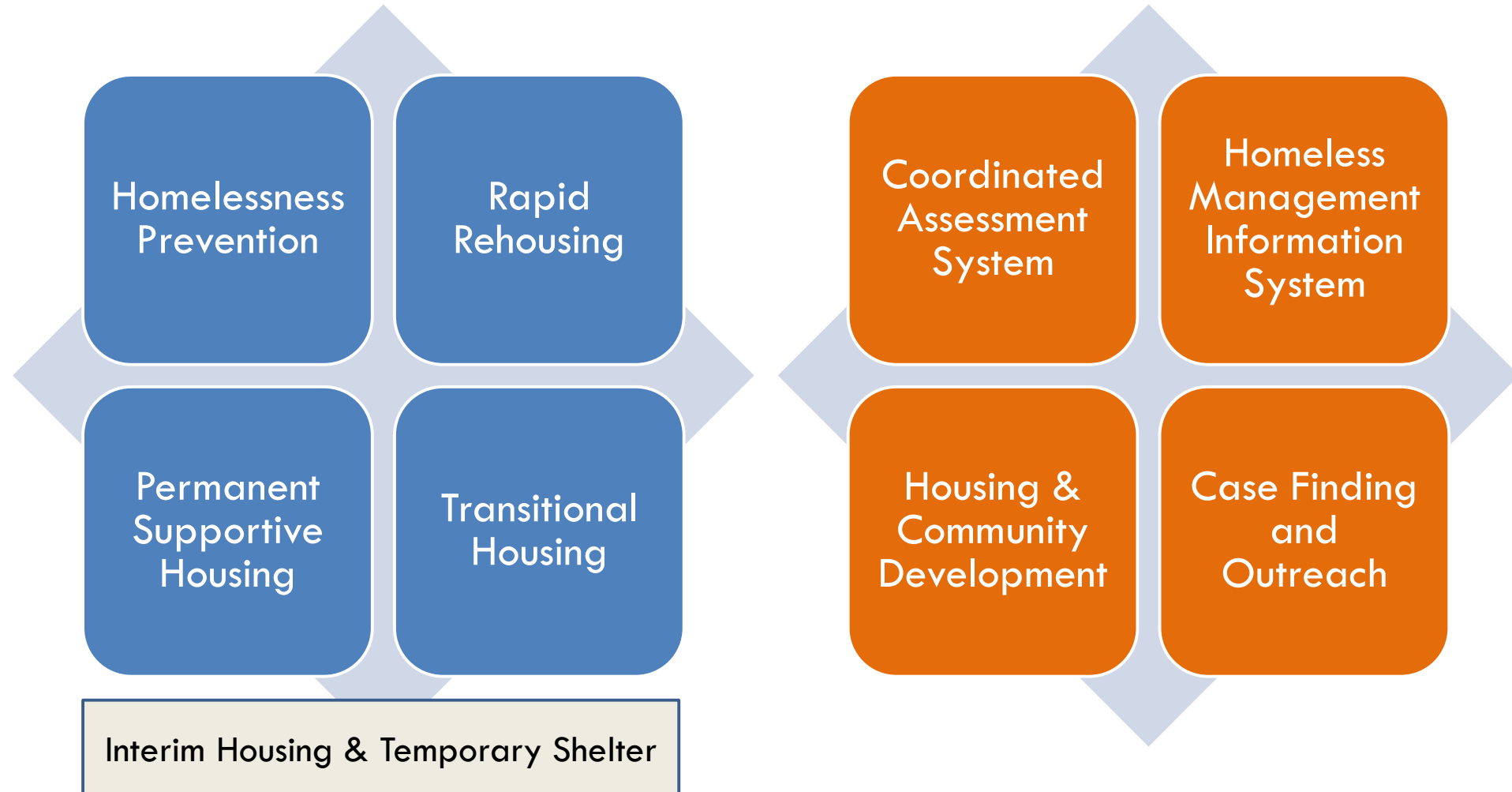
- Increase the scope and breadth of supportive housing for special needs populations, including homeless and chronically homeless persons.
- Increase the supply of housing that is affordable to extremely low income (ELI) households.
- Improve coordination and collaboration among the County, the cities, other governmental agencies and the affordable housing community.



FY 2022 Organization by Budget Unit



Supportive Housing System





County Investments, FY 2019-20*

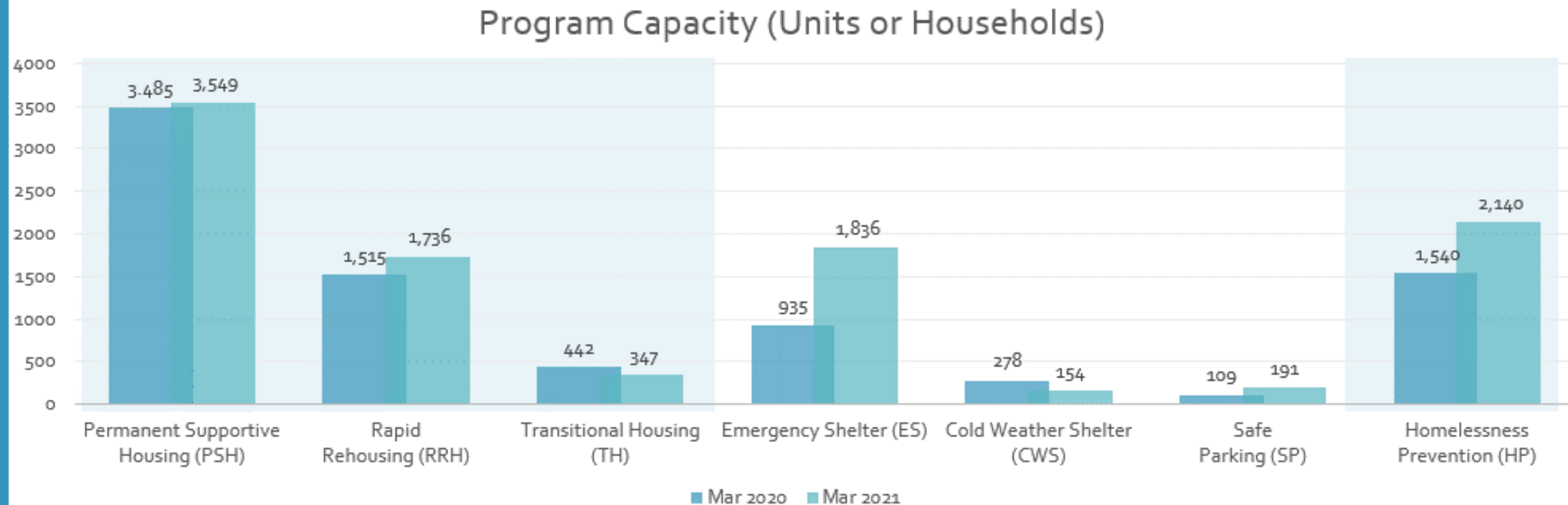
6

System Coordination and Administration	\$ 6,554,675
Crisis Response	\$ 18,517,179
Homelessness Prevention	\$ 11,727,739
Rapid Rehousing	\$ 16,816,959
Permanent Supportive Housing	\$ 22,241,006
Housing and Community Development	\$ 4,274,187
Other	\$ 7,518,075
Total	\$ 87,649,820

Does not include special funds such as Housing Bond or CDBG

Supportive Housing System Capacity by Program Type as of March 2021

Capacity reflects the number of households that can be served by night unless otherwise indicated



Capacity reflects the number of households that can be served per night except for RRH and HP, which reflect the estimated number of households that can be served annually.



County Housing Production Goals and Progress

YEAR 4 IMPLEMENTATION

\$533,001,528

IN MULTI-FAMILY HOUSING DEVELOPMENT APPROVED

7 CITIES

2,969 NEW APARTMENTS

618 UNITS RENOVATED

34 HOUSING DEVELOPMENTS

\$25 MILLION

FIRST-TIME HOMEBUYER PROGRAM

*As of February, 2021. The implementation update does not include County acquisitions.

Unit / Affordability Type	Total Units	Unit Goals	% of Goal Met
Permanent Supportive Housing	1,503	1,800	83%
Rapid Rehousing	314	1,600	20%
Affordable to ELI Households	562	800	71%
Affordable to VLI Households	598	600	98%
Totals	2,977	4,800	62%

**Five-Year Community
Plan to End
Homelessness**

Supportive Housing System Progress 2015-2019

Thanks to the collective efforts of partners throughout the community, over the past five years, we have done the following:

Helped **8,884 households** resolve their homelessness,

representing **14,132 people**



Doubled the number of supportive housing units in Santa Clara County



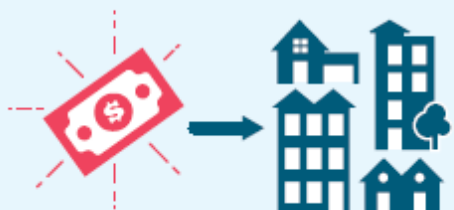
Doubled our temporary housing and emergency shelter capacity



Launched a new homelessness prevention system that now serves about **1,000 households annually**



Led a community-wide campaign that has successfully housed more than **1,600 veterans** and engaged nearly **800 private landlords** in the effort



Voters approved **\$950 million** to develop affordable housing through the 2016 Measure A Affordable Housing Bond and raised another **\$100 million** in private contributions to support the implementation of the community plan

PROGRESS TO DATE

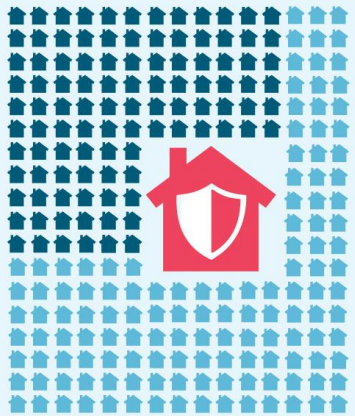
By 2025, we will:



Achieve a **30% reduction** in annual inflow of people becoming homeless*

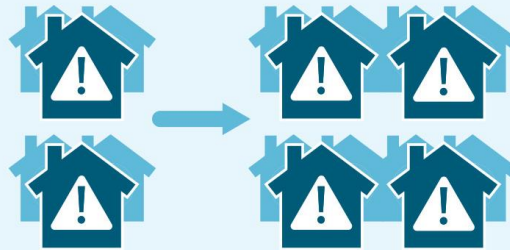


House **20,000 people** through the supportive housing system



Expand the Homelessness Prevention System and other early interventions to serve

2,500 people per year



Double temporary housing and shelter capacity to reduce the number of people sleeping outside

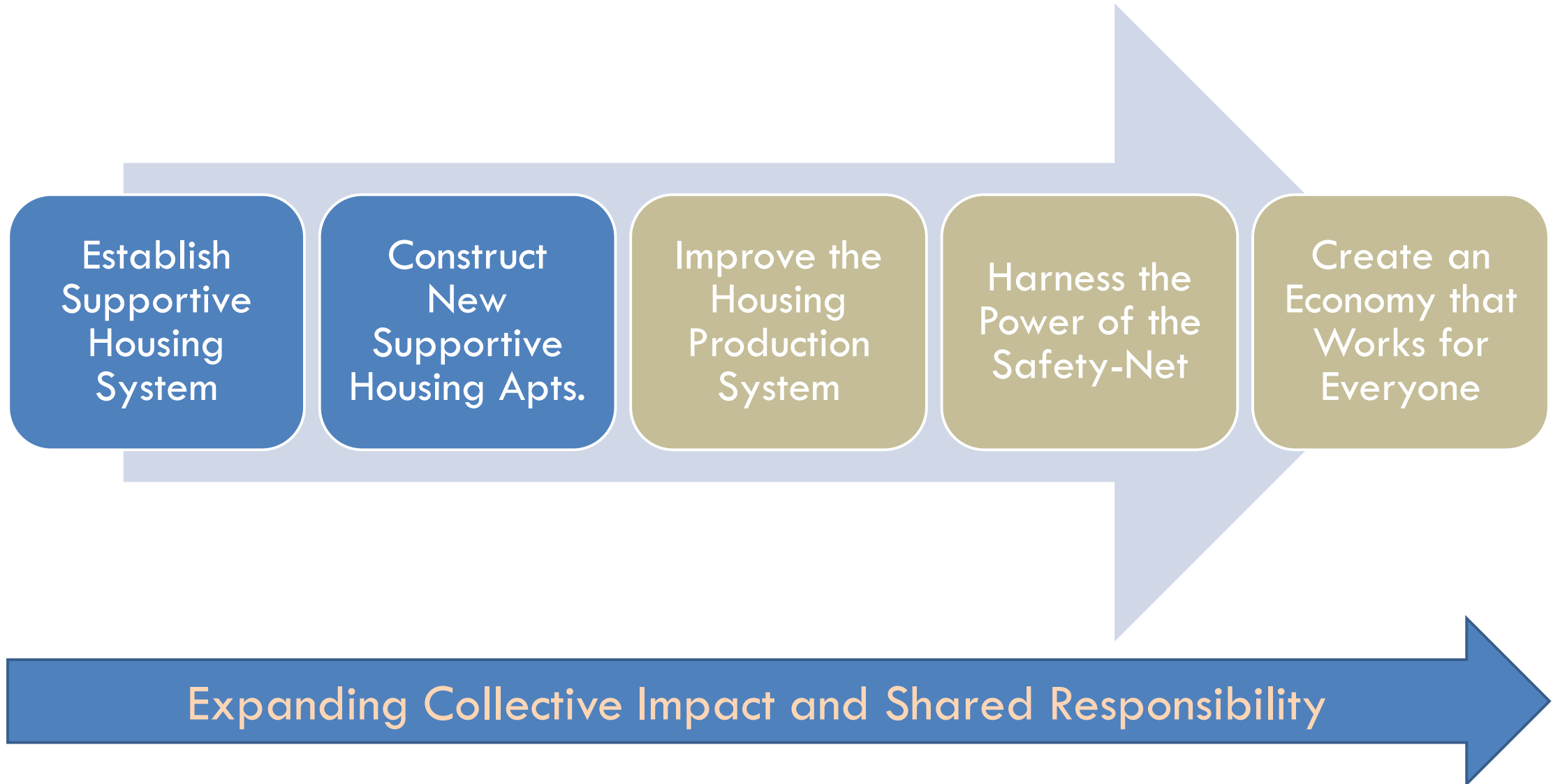


Address the **racial inequities present** among unhoused people and families and track progress toward reducing disparities

AGGRESSIVE TARGETS



It's Not a Program It's a Movement



County of Santa Clara

13

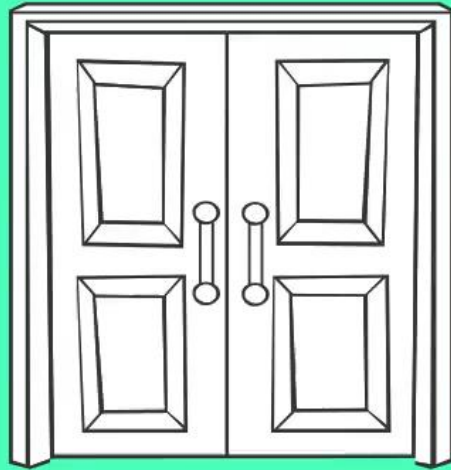


- ❑ Integrate specialty mental health services and funding as part of PSH
- ❑ Integrate safety-net programs into the supportive housing system
- ❑ Provide integrated medical services to enhance supportive housing programs
- ❑ Advocate for supportive / ELI housing

Photos courtesy of the Mercury News

ENDING HOMELESSNESS

IN SANTA CLARA COUNTY



VYOND

QUESTIONS?